



Harriet Tubman
UGRR Byway
Cell Phone App



Visit Dorchester Cell
Phone App – Pine
Street Tour

Churches played a significant role on the Underground Railroad, providing sanctuary for freedom seekers and resources to help them resettle. Their important legacy uniting and sustaining African-American communities continued through the decades, and they emerged as leaders in the Civil Rights Movement.

Harriet Tubman's life also was rooted in an intensely deep spiritual faith, founded upon religious teachings.

Narration for the sites on this self-guided tour is included on the free Harriet Tubman Underground Railroad Byway cell phone app and on the Visit Dorchester cell phone app.



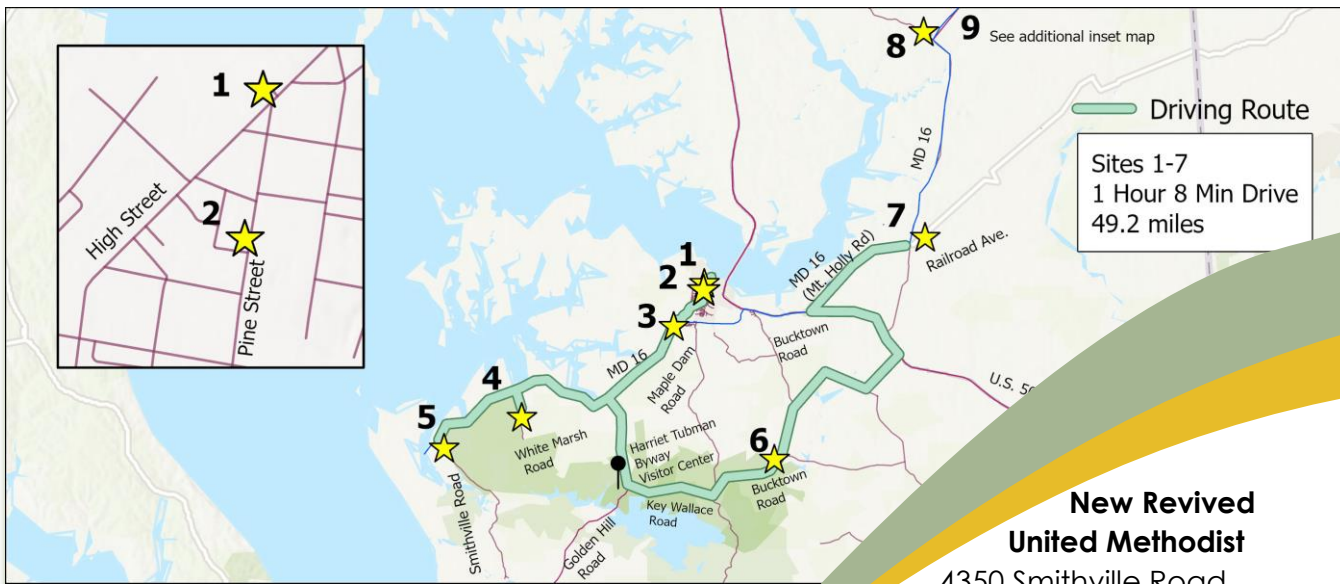
Spiritual Connections



CAMBRIDGE
Maryland



Self-guided Tour
Churches on the Underground Railroad Byway & Local Churches Influential in the Civil Rights Movement



1 **Waugh Chapel**
425 High Street, Cambridge
No. 5 on the Pine Street Tour

2 **Bethel AME Church**
623 Pine Street, Cambridge
No. 10 on the Pine Street Tour

3 **Stanley Institute/
Christ Rock Church**
2403 MD-16, Cambridge
No. 6 on the HTURR Byway App

4 **Malone's Methodist Episcopal Church**
White Marsh Road, Madison
No. 8 on the HTURR Byway App

**New Revived
United Methodist**
4350 Smithville Road
Taylor's Island
No. 11 on the HTURR
Byway App **5**

6 **Scott's Chapel**
West side of Bucktown Road
Bucktown
No. 19 on the HTURR Byway App
**drive-by access only*

7 **Faith Community United Methodist**
Railroad Avenue, East New Market
No. 21 on the HTURR Byway App

Inspired to venture further afield? The two sites below also are on the Byway app, and will add about 28 miles to the tour.

8 **Mount Pleasant Cemetery**
2246 Marsh Creek Road, Preston
No. 25 on the HTURR Byway App

9 **Tuckahoe Neck Meeting House**
Meeting House Road, Denton
No. 33 on the HTURR Byway App

Be Inspired
Self-guided tour of historical churches
throughout Dorchester County

The seven sites can be visited in any order; however, we have listed them starting with those in downtown Cambridge and then moving into Dorchester County. We also have included the stop number on each app so that you can find the narration easily. The tour covers approximately 50 miles, and visiting the full list is expected to take 1½ - 2½ hours, including driving and listening to the narration at each site.

The first two sites are part of the Visit Dorchester Audio Guide's Pine Street Tour, which focuses on African-American history and heritage in Cambridge. The other sites can be found on the Harriet Tubman Byway app.

Please be aware that there are active congregations at some of these churches, and they may be having services when you visit.

**Download
the two free cell
phone apps with
narration for the sites:**

- Visit Dorchester Audio Guide (Pine Street Tour)
- Harriet Tubman Underground Railroad Byway Guide